

# Pilot Operated, 1/4", 3/8", All Stainless Steel, 3/2, 5/2 Function Solenoid Valve

**RGS**

## Description

Direct, Spool operated solenoid valve.

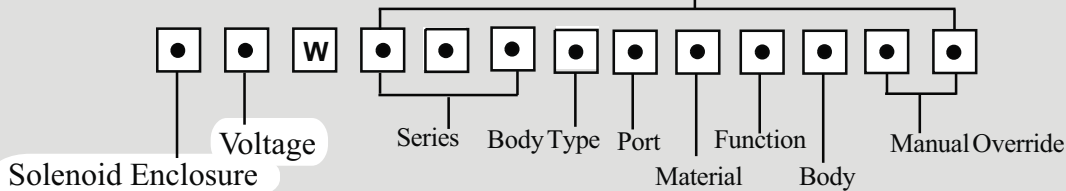
## Features

- All stainless steel construction enclosure.
- Bubble tight terminal box.
- 100% ED.
- Manual override. Option Manual Reset
- M20 1.5 Conduit Connection, please contact for others
- Maximum pressure 8.0 bar.
- The use of first class materials and thorough valve testing ensure high reliability and more stability in hazardous environment with minimum lifetime of at least 2 million cycles.
- Valves do not require a minimum operating pressure.



## Product Code :

### Body Options



See Reference for product code details  
Any of the below options that are not required enter '0' in relevant box.

## Solenoid Enclosure

**AV6360D00** EExd Flame Proof Stainless Steel Housing

**D**

**AV6360500** EExN Stainless Steel Housing

**N**

**AV6360S00** EExia Intrinsically Safe Stainless Steel Housing

**A**

## Voltage

### Voltage:

12v DC

### Code:

**A**

### Voltage:

48v DC

### Code:

**C**

### Voltage:

110v AC (50/60 Hz)

### Code:

**T**

12v DC Low Power

**G**

110v DC

**D**

240v AC (50/60 Hz)

**U**

24v DC

**B**

24v AC (50/60 Hz)

**R**

415v AC (50/60 Hz)

**3**

24v DC Low Power

**H**

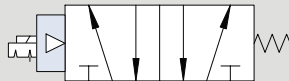
48v AC (50/60 Hz)

**S**

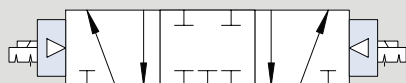
No Voltage (no coil)

**0**

## Body Options



5 Port 2 Position



5 Port 3 Position - Double

SERIES	BODY TYPE	PORT	MATERIAL	FUNCTION	BODY	MANUAL OVERRIDE						
L20	Spool	0	Inline	3 1/4"	S	Stainless Steel	A	5 Port 2 Position	A	Single	MO	Manual Override
		1	Direct	4 3/8"	A	Aluminum	B	5 Port 3 Position Block	B	Double		
M30	Mini						C	5 Port 3 Position Exhaust				
L45	Spool			5 1/2"			G	3 Port 2 Position				